

AZUL™ VAPORTITE

AZVT | STATIC CIRCADIAN LED | WET RATED



- Circadian lighting inspired by sunlight to promote focus and alertness throughout the day, enhancing performance and supporting the natural sleep-wake cycle.
- Healthē's GoodDay® engineered-spectrum delivers a boost at 480nm, a key wavelength of light that is typically absent indoors, to deliver highest M/P ratio for maximum alerting effect over conventional LED.
- AZUL products are designed for integration with a Class II, distributed DC system, powered via low voltage from a micro-grid power supply and controlled from a centralized, programmable panel. For facilities with a comprehensive Building Management System (BMS), the open protocol distributed DC lighting system adds control and monitoring capabilities, simply.
- Choice of prismatic acrylic lens for directional illumination or diffused acrylic lens for evenly distributed luminance while delivering optimal light transmission.
- Ideal for wet and dirty environments, this gasketed and sealed luminaire is IP65 and UL wet location listed, meeting the maintenance requirements for food processing plants, grow house harvesting centers, natatoriums and high dust industrial facilities.
- Provides energy-efficient, circadian lighting suitable for a variety of industrial applications with a choice of 4000K or 5000K CCT.

SPECIFICATIONS *All data shown is nominal*

SOURCE	
LED	Proprietary GoodDay® Engineered Spectrum
CCT	GoodDay 5000K, 4000K
Lumen Output	High: 8000Lm (Diffused), 7600Lm (Prismatic) , GoodDay 5000K Standard: 4000Lm (Diffused), 3800 (Prismatic), GoodDay 5000K
Melanopic/Photopic Ratio	> 0.9 GoodDay 5000K
CRI	90 GoodDay 5000K, 4000K
R9	90 GoodDay 4000K; 50 GoodDay 5000K
Color Chromaticity	SDCM<5
LED Lifetime to L80	>69,000 hours
OPTICAL	
Lens	Acrylic Prismatic; Acrylic Diffused
ELECTRICAL	
Input Voltage	High: 48VDC @ 1.5A max Standard: 48VDC @ 0.75A max
Power Consumption	High: 66W Standard: 33W
Efficacy	121Lm/W (Diffused), 115 Lm/W (Prismatic), GoodDay 5000K
Control Protocol	Azul MV
Dimming Range	10–100%
MECHANICAL	
Housing	Polycarbonate
Finish	Glossy White
Dimensions	47.2 x 3.5 x 3.1 in (1200 x 890 x 790 mm)
Weight	TBD
Operating Temperature	-20 to 50C (tCase)
Mounting	Surface, Stainless Steel Clips
CERTIFICATIONS & WARRANTY	
Certifications	ETL, FCC
Environment	IP65; Rated for Wet Locations
Warranty	5 Year Limited



ORDERING

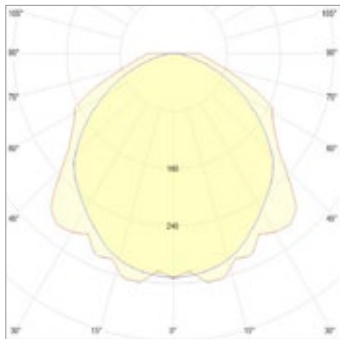
EXAMPLE: AZVT 4 PR 40 DC 33 WH

Model	Size	Optics	CRI	Control	Wattage	Color
AZVT Azul Vaportite	4 4 ft	PR Prismatic	50 GoodDay® 5000K	DC Direct Current	33 33 Watts	WH White

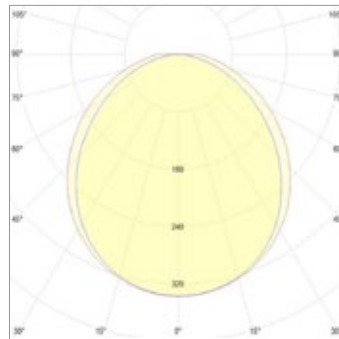
PERFORMANCE *All data shown is nominal*

Power Consumption	CCT	DIFFUSED OPTICS		PRISMATIC OPTICS		M/P Ratio	CRI	R9
		Lumen Output (Lm)	Efficacy (Lm/W)	Lumen Output (Lm)	Efficacy (Lm/W)			
66W (High)	5000K	8000	121	7600	115	0.93 ± 0.02	90	50
	4000K	7600	115	7200	109	0.83 ± 0.02	90	90
33W (Standard)	5000K	4000	121	3800	115	0.93 ± 0.02	90	50
	4000K	3800	115	3600	109	0.83 ± 0.02	90	90

CANDELA CURVE

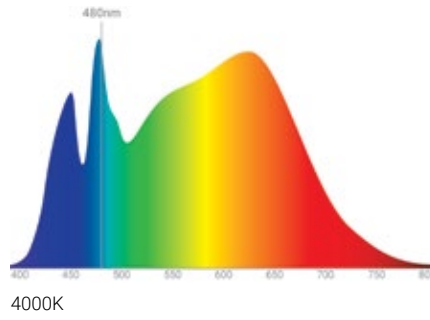
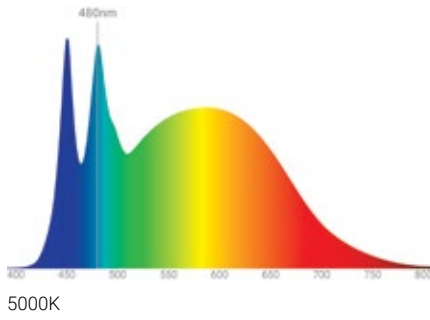


Prismatic Lens

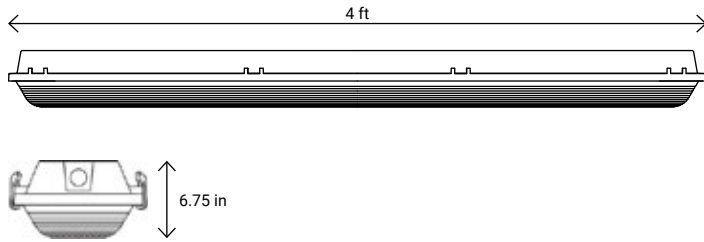


Diffused Lens

SPECTRAL DISTRIBUTION



DIMENSIONS



ALTERNATE IMAGES



Slim Design



Easy-Release Clamps